



*Honoring*  
THE LEGACY *Building*  
THE FUTURE



Lewis County  
**Health System**

Your Health Partner

**Annual Report 2022**

# CONTENTS

- Page 2-3** : Contents | Vision, Mission, Values | Transitioning to a New Normal
- Page 4-5** : Board of Managers and Medical Staff Executive and Leadership Team | Message from the CEO
- Page 6-7** : Employee Recognition | New Medical Staff
- Page 8-9** : Medical Staff Listing | Focused on Quality
- Page 10-11**: Pursuing Excellence | Providing Access To Services
- Page 12-13**: Technology and Advancements | Statement of Operations
- Page 14-15**: Capital Project Advances
- Page 16-17**: Friends of Lewis County Hospice Supports Hospice | LCGH Auxiliary Makes a Difference
- Page 18-19**: Lewis County Hospital Foundation Mission, Volunteers, and Events | Capital Project Campaign
- Page 20-21**: Honoring the Legacy, Building the Future
- Page 22-23**: Campaign Giving | 1931 Legacy Society | Employee Giving
- Page 24-25**: Community Giving | Event Sponsors
- Page 26-27**: Planned Giving | View Before and After Surgical Pavilion Aerial



## VALUES

The Lewis County Health System values support our culture and strengthen our mission. The health system is 'all in' when it comes to accomplishing our mission and living by our values.

**INTEGRITY** - Do the right thing when no one is watching.

**COMPASSION** - Show kindness, caring, and a willingness to help others.

**ACCOUNTABILITY** - Be accountable for actions, performance, and behavior.

**RESPECT** - Appreciate the feelings, rights, wishes, and traditions of others.

**EXCELLENCE** - Approach every challenge with the determination to exceed expectations.

## VISION STATEMENT

The communities of Lewis County are the healthiest in New York State and America.

## MISSION STATEMENT

Lewis County Health System is committed to working cooperatively with interested individuals and organizations in helping the people of Lewis County and surrounding communities in achieving their highest level of health and wellness.

# EMBRACING CHANGE, MOVING FORWARD

## Transitioning to a 'New Normal'

Two thousand twenty-two was not a year immune from COVID-related challenges for Lewis County Health System; however, it was a time marked by resilience, recovery, renewal, and reimagining. Many COVID-19 restrictions were lifted, allowing staff, patients, and residents to gather in person for meetings, group activities, and events. A return to the 'new normal' resulted in a renewed spirit throughout the system.

The impact of workforce shortages had a profound effect on LCHS. Resilient team members across the health system stepped up to cover shifts and ensure patients, residents, staff, and community members had access to quality care. Key leadership staff simultaneously focused on restoring staffing levels to pre-pandemic levels.

While still responding to COVID-19, the health system broke ground in April 2022, investing in critical infrastructure to meet the healthcare needs of the next generation. The pandemic influenced project design, technology, and capacity including:

- Designed headwalls on the medical-surgical and critical care units to allow LCHS to double patient capacity to meet future surge needs
- Added a third negative pressure room to enhance infection prevention and safety

We continue looking for new ways to collaborate and share resources with our employee teams, healthcare partners, and local and regional organizations to meet community needs. The key to a successful future, Lewis County Health System will continue to embrace change and reimagine care to be ready for future generations.



Members of the Lewis County Board of Managers, Lewis County Hospital Foundation, LCHS medical staff and employees participate in the official project groundbreaking.

# LEWIS COUNTY HEALTH SYSTEM

## Board of Managers

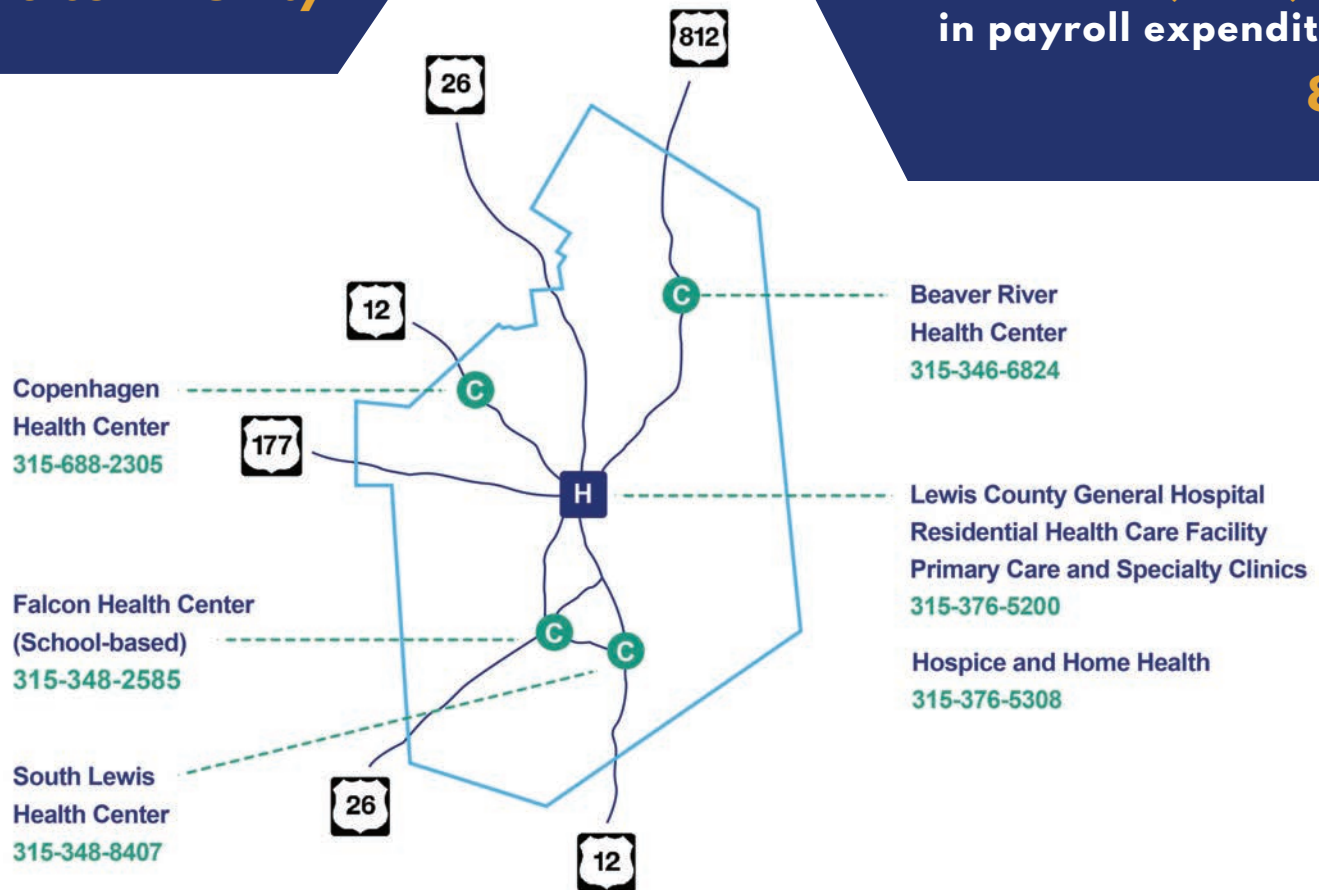
Michael F. Young, President  
 Donald C. Musnicki, Vice President  
 Philip E. McDowell, Secretary  
 Richard Chartrand, Legislative Liaison  
 Jennifer Jones  
 John Lehman  
 Marguerite Mastascusa  
 Howard T. Meny, M.D.  
 Karen Rennie  
 Susan J. Ross  
 Cheryl Steckly

## Medical Staff Executive Committee and Medical Leadership

Mary Lou Feilmeier, M.D., President  
 John Wat, D.O., Vice President  
 John Leuenberger, D.O., Secretary/Treasurer  
 Timothy Mathis, M.D., At Large Member  
 Evan Leibelsperger, P.A., At Large Member  
 Steven Lyndaker, M.D., Hospital Medical Director  
 Shirley Tuttle-Malone, D.O., Residential Health Care Facility/Home Health/Hospice Medical Director  
 Shereen Palmer, M.D., Public Health Medical Director  
 Manoj Vora, M.D., Hospitalist Medical Director

**Lewis County Health System is an economic anchor in the community**

**GENERATING**  
**\$120,000,000**  
 in economic activity  
**\$51,000,000**  
 in payroll expenditures  
**800**  
 jobs



# MESSAGE FROM THE CEO

Gerald R. Cayer, MPH

This is an exciting time for the Lewis County Health System as we successfully navigated the third year of the COVID-19 pandemic, while laying the foundation for our future success with a \$32 million "Honoring the Legacy, Building the Future" capital project.

The construction of the new surgical pavilion and modernization of the medical-surgical and critical care units on our main campus will help ensure we can continue to provide safe and efficient health care to patients and their families.

State-of-the-art facilities and equipment will support recruiting the next generation of healthcare clinicians, providers, and support team members, providing increased access to patient care services. Several examples are highlighted in this report: developing local access to outpatient infusion and phlebotomy services and the installation of new equipment and technology in the lab and radiology departments.

Each day, I see new examples of how the "system" approach helps bring the latest technology to patients and how cooperation among the care team makes patient care more efficient and effective—for example, identifying and quickly intervening when a patient shows signs of a life-threatening conditions like sepsis and stroke.

Looking ahead, we must continue strengthening our culture of safety, and investing in our workforce and infrastructure to prepare for tomorrow's healthcare needs. With the ongoing support of our healthcare team and the community, Lewis County Health System will remain strong and will continue to impact the health and wellness of the people we serve in Lewis County and the North Country region.



Mr. Gerald Cayer conducts a project tour for the Health System Board of Managers.

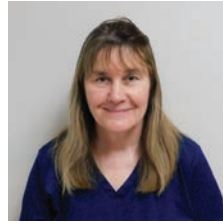
## CAREGIVERS OF THE YEAR



Nancy Mooney, CNA  
1st Floor  
Nursing Home



Cheyenne Brooks, CNA  
1st Floor  
Nursing Home



Bert Snyder, Unit Helper  
3rd Floor  
Nursing Home

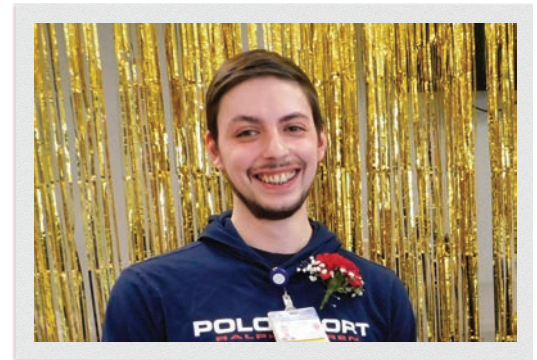


Mary Dunn, LPN  
2nd Floor  
Nursing Home

## EMPLOYEE OF THE YEAR

Philip Snow, Employee of the Year, is a Certified Nursing Assistant who works as an Activity Aide in the Residential Health Care Facility Activities Department.

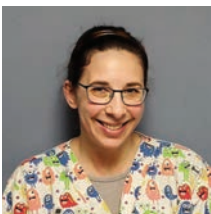
"Phil's ability to go above and beyond for residents and employees is extraordinary. He has such a kind and beautiful heart that allows him to recognize the needs of those around him and provide outstanding care."



Philip Snow  
Residential Health Care Facility

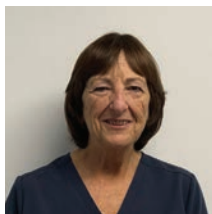
## EMPLOYEES OF THE MONTH

### January



Melissa Bush  
Nutrition Services

### February



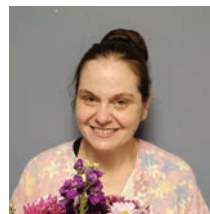
Patricia Hellinger, LPN  
Surgical Services

### March



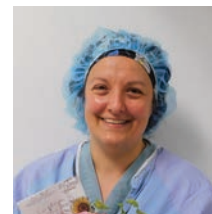
Rebecca Keiffer, RN  
Staff Development

### April



Pamela Kloster  
Nutrition Services

### May



Tina Gigliotti, RN  
Surgical Services

### June



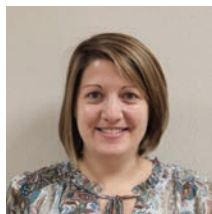
Jackie Simmons, RN  
Nursing Home

### July



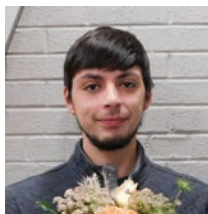
Johnna Lane  
Surgical Clinic

### August



Jacqueline Pate, RN  
Case Management

### September



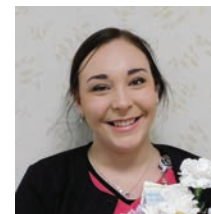
Philip Snow  
Nursing Home

### October



Marcos Cruz, RN  
Nursing Home

### November



Elizabeth Lawrence, RN  
Med-Surge Unit

### December



Amy Godlewski, RN  
Ambulatory Surgery

# NEW MEDICAL STAFF

WELCOME TO THE TEAM



## ROBERT SEMLEAR, M.D.

**Beaver River Health Center - 315-346-6824**

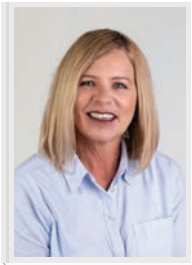
Medical School: New York University Medical School, New York, NY  
Board Certified Family Practice



## SHANE K. WOOLF, M.D.

**Lewis County Orthopedics - 315-376-4505**

Medical School: Pennsylvania State University College of Medicine, Hershey, PA  
Board Certified American Board of Orthopedic Surgery, with added qualification in Sports Medicine.



## JULIA WATERS, FNP-C

**South Lewis Health Center - 315-348-8407**

Education: Nebraska Methodist College, Omaha, NE  
Certified by the American Academy of Nurse Practitioners



## DANAH ERNST, FNP-C

**Women's Health Center - 315-376-5475**

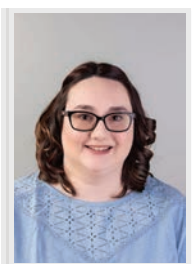
Education: University of New York Polytechnic Institute, Utica, NY  
Certified by the American Academy of Nurse Practitioners



## NICOLE TOPITS, FNP-C

**Lewis County Family Practice - 315-376-5287**

Education: Northern Kentucky University, Highland Heights, KY  
Certified by the American Nurses Credentialing Center



## HALI REID, FNP-C

**Women's Health Center - 315-376-5475**

Education: Utica University, Utica, NY  
Certified by the American Association of Nurse Practitioners

# LEWIS COUNTY HEALTH SYSTEM

## MEDICAL STAFF

### Anesthesia

Abdelrahman Elgallad, M.D.  
Myriam Beniamin, M.D.  
Mikhail Choubmesser, M.D.  
Alice Loving, M.D.

### Cardiology

Andrew Ho, M.D.  
Peter Hotvedt, M.D.  
Brian Gaffney, M.D.  
Michael Kelberman, M.D.  
John O'Laughlin, M.D.  
Gerry Love, M.D.  
Hugh MacIssac, M.D.  
Darius Marhamati, M.D.  
Faisal Saiful, M.D.  
Michael Sassower, M.D.  
Prabhat Varma, M.D.  
Colin Wright, M.D.

### Dentistry

Laura Gonzalez, DMD (RHCF)

### Emergency Medicine

Timothy Mathis, M.D.  
Kenneth Berry, M.D.  
Abdul Elfar, M.D.  
Jie He, D.O.  
Vinod Garg, M.D.  
Ian Gokey, PA  
Timothy Karnuth, PA

### Family Medicine

Monica Kwicklis, M.D.  
John Leuenberger, D.O.  
Kathryn McHugh, M.D.  
M. Lynn Pisaniello, M.D.  
R. Brian Shambo, M.D.  
Shirley Tuttle-Malone, D.O.  
Robert Semlear, M.D.  
John Wat, D.O.

### Family Medicine

#### Continued

Kathy Der, NP  
Julie Emery, NP  
Nicole Topits, NP  
Stacey Walton, NP  
Julia Waters, NP  
Kimberly Leibelsperger, PA

### General Surgery

Jon Baker, M.D.  
Steve Kwon, M.D.  
Felipe Orellana, D.O.  
David Vivas, M.D.

### Hospitalists

Vikram Arya, M.D.  
Mercedes Behar, M.D.  
Aaron Campbell, D.O.  
C. Jay Ellie, M.D.  
Dean Hanna, M.D.  
Daisy Jaganathan, M.D.  
Alex Strassburg, M.D.  
Alison Kiser, NP  
Rebecca Matteson, NP  
Jonathan Mizgala, NP  
Johanna Rhein, NP  
Nicholas Andjerack, PA  
Ibrahim Al-Bassiony, PA  
Courtney Case, PA  
Jeffrey Smith, PA  
Ryan Smith, PA

### Infection Disease

Avrille George, M.D.  
(Tele-Medicine)

### Internal Medicine

Steven Lyndaker, M.D.  
F. Adam Seigers, M.D.  
Manoj R. Vora, M.D.

### Nephrology

Khalid Sindhu, M.D.

### Neurosurgical Services

Nicholas Qandah, D.O.

### OB/GYN

Gerard Crawford, II, M.D.  
F. Lee Dutton, M.D.  
Danah Ernst, NP  
Hali Reid, NP

### Ophthalmology

Debra Koloms, M.D.  
Noaman Sanni, M.D.

### Orthopedics

Steven J. Kaplan, M.D.  
James Mason, D.O.  
Shane K. Woolf, M.D.  
Evan Leibelsperger, RPA-C

### Pain Management

Michelle Johnston, M.D.

### Pathology

Robert Coffin, M.D.

### Pediatrics

Mary Lou Feilmeier, M.D.  
Shereen Palmer, M.D.  
Nathaniel Meuser-Herr, M.D.

### Podiatry

Mark Schug, D.P.M. (RHCF)

### Pulmonology

David Rechlin, D.O.

### Psychiatry

Toby Davis, Ph.D.  
Jake Kin, Ph.D.  
Samuel Rubenzahl, Ph.D.  
Steven Fogelman, M.D.

### Radiology

Jeffrey Way, M.D.



# FOCUSED ON QUALITY

## RAPID RESPONSE TO THE POTENTIALLY DEADLY SEPSIS INFECTION SAVES LIVES

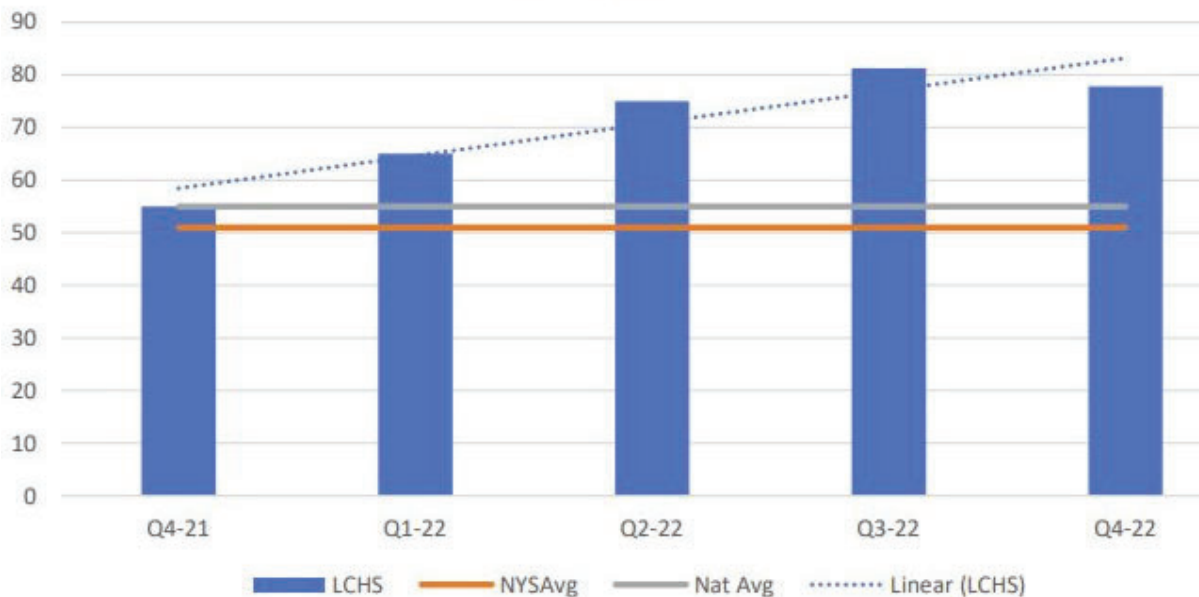
LCHS has a team of dedicated healthcare professionals who work to quickly intervene when a patient in our facility shows signs of sepsis.

Sepsis is a life-threatening medical emergency. It happens when an infection a patient already has – in their skin, lungs, urinary tract or somewhere else – triggers a chain reaction throughout the body. Sepsis moves rapidly and, without timely treatment, can lead to tissue damage, organ failure and death in up to 30 percent of patients who delay seeking care.

The sepsis team is notified when the hospital's electronic health record system detects symptoms of sepsis in a patient's vital signs, including the patient's temperature, heart rate and lab results. When notified of these markers, the team directly contacts the patient's physician or nurse to let them know that they should begin sepsis treatment, following specific steps that include blood tests, the administration of antibiotics and other treatments.

The time it takes to identify and respond to sepsis cases has dramatically shortened. The faster response time improves patient outcomes and shortens the length of sepsis related hospital stays, while also reducing associated healthcare cost. Due to our dedicated team, the percentage of our patients who receive both timely and effective care for severe sepsis and septic shock is better than both the state and the national average.

### LCHS SEPSIS INTERVENTION NUMBERS WELL ABOVE STATE AND NATIONAL AVERAGES



# PURSuing EXCELLENCE

## TRANSITIONING NEW NURSES INTO PRACTICE

### The Nurse Residency Program at Lewis County Health System

Lewis County Health System celebrated the first class of Nursing Residency Program graduates on September 15, 2022, with ten registered nurses receiving graduation certificates.

The 15-week Nurse Residency Program began in July and prepared the new graduate nurses to transition from the school to the work environment. The program gives graduates nurses the opportunity to sharpen clinical skills they will be using immediately and build relationships with peers and mentors. Graduates work on the medical-surgical and Critical Care Unit floors with senior nursing mentors and travel to various departments to experience the impact those areas have on patient care. One day a week was dedicated to classroom instruction where speakers provided education on various subjects like; self-care, documentation, evidenced-based care and quality, clinical skills, just culture, lab, dietary, home health and hospice topics, and more.

The program fosters a spirit of community and has resulted in greater levels of nurse retention.



In photo back row left to right: Tressa Goolden, Amy Godlewski, Karine Mangasarova, Crystal Girouard, Haley Reed, Emilee Muncy, and Morgan Hastwell.  
Front row left to right: Liza Kampnich, Laura Stewart, and Elizabeth Lawrence.

# PROVIDING ACCESS TO SERVICES

## Outpatient Infusion Services



*Katie Cihocki, RN, Cynthia Cutway, RN,  
and Tina Dicob, RN*



*Rochelle Sullivan, RN, Amy Godlewski, RN,  
and Mackenzie Dorrity, LPN*

Lewis County Health System Ambulatory Nurses are collaborating with providers to ensure community members can receive necessary infusions at Lewis County General Hospital. Infusion treatments are available Monday – Friday on the hospital's second floor in the Ambulatory Outpatient Unit. Infusions are administered by a registered nurse and overseen by the hospital's medical director. On-site pharmacy staff ensure patient safety by providing comprehensive medication management.

LCGH offers the following infusion treatments and outpatient procedures:

- Infliximab Infusion - Maintenance
- Simponi Aria (golimumab)
- Entyvio (vedolizumab)
- Zoledronic Acid
- Immune Globulin 10% Infusion
- Iron Sucrose
- PICC Line Dressing Change and Blood Draw from PICC Line
- Port Flush
- Alternate Medication ordered by Provider (need approval from LCGH Pharmacy)
- Phlebotomy Outpatient Services

Order forms and outpatient service request forms are available on the hospital website for specialists and providers to order an infusion. Providing outpatient infusion services is another way Lewis County Health System partners to offer local access to care for our patients and residents.

Learn more at <https://www.lcgh.net/outpatient-infusion-services>.

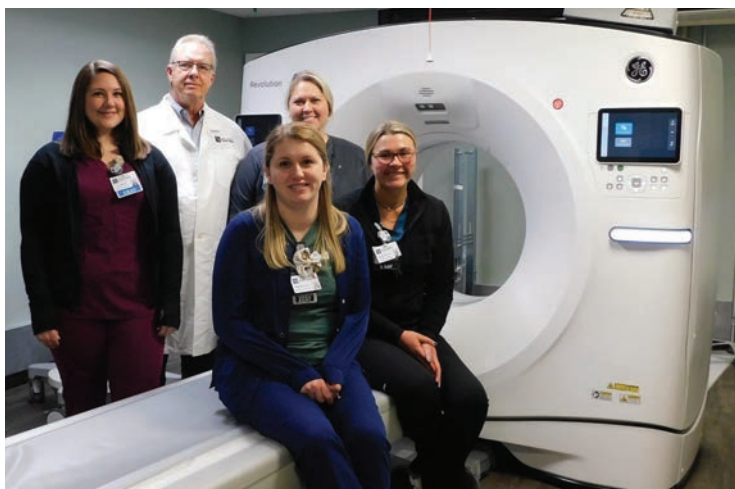
# TECHNOLOGY AND ADVANCEMENTS

## IMAGING SERVICES

The Radiology department continues with equipment advancements to stay on the cutting-edge with technology. The CT department installed a state-of-the-art 128-slice low-dose CT scanner in November. With the investment in this technology, we can obtain the highest quality images in the area while reducing radiation exposure to patients.

The MRI department received an upgrade to an already top-of-the-line scanner. The advanced Air Recon DL dramatically improves the quality of images we produce and allows us to have those images in 30-50% less time. In addition, the Wide-Bore magnet provides more space and quicker scans, making the experience even more comfortable for patients.

The department also purchased a new Radiographic/Fluoroscopic unit. Aside from vastly improving image quality, the new technology comes with a 700-pound table capacity that lowers 18" from the floor, making it easier and safer for patients to get on and off the table. The increased table capacity allows us to serve patients in our community who would have had to travel elsewhere for care in the past.



Chief of Radiology Jeffrey Way, MD with CT Technologists Sarah Scouten, Sarah Froehlich, Brittany Ebersol, and Nikeisha Spann with the new 128-slice CT scanner



Laboratory staff member Elaine Zehr using the Ortho Vitros 7600 analyzer

## LABORATORY SERVICES

Every day, patient lives depend on lab results. Medical staff need timely test results to provide care and treatment.

The Laboratory installed the Cepheid Gene Xpert benchtop PCR system which sets the standards for molecular testing diagnostics. Within 25 minutes the equipment can test for viruses like COVID-19, Flu A, Flu B and RSV.

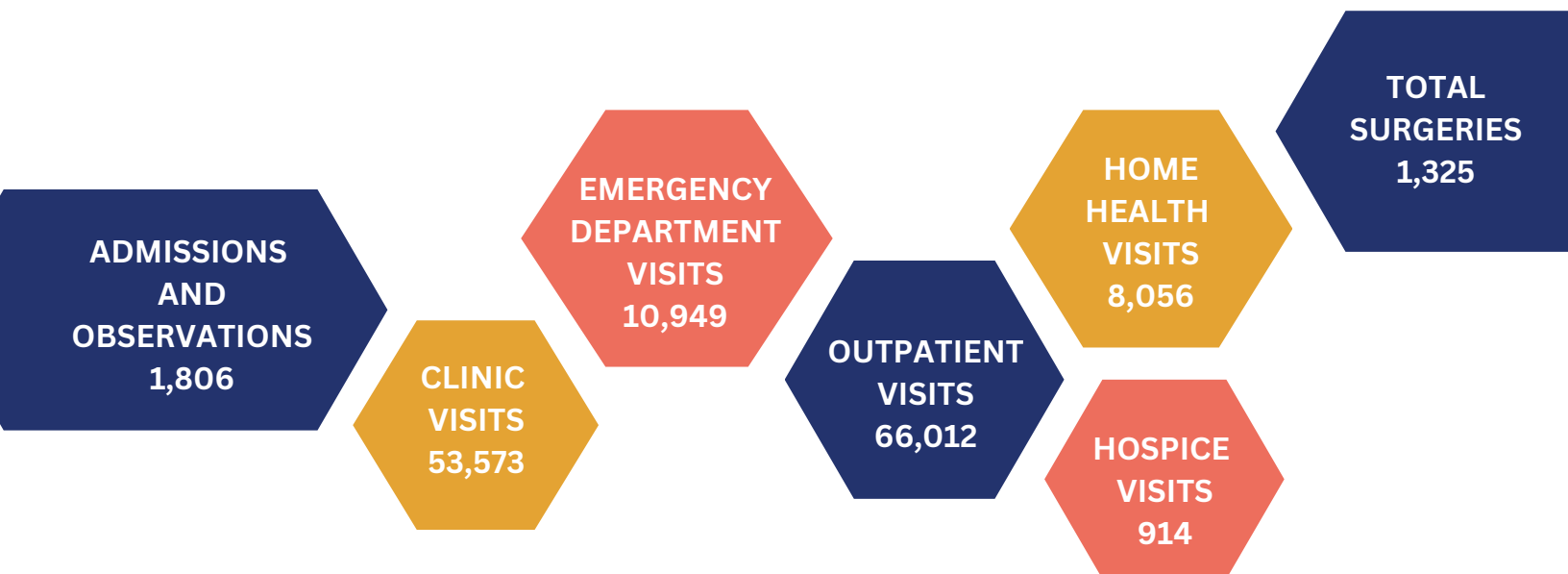
The second Ortho Vitros 7600 and 3400 chemistry and IA analyzer ensures faster turnaround times and accurate results. The new equipment and technology significantly reduces downtime and enables the Laboratory to perform testing previously sent to outside facility laboratories.

# BY THE NUMBERS

## STATEMENT OF OPERATIONS

<b>INCOME</b>	<b>2020</b>	<b>2021</b>	<b>2022</b>
Net patient care revenue	64,425,011	66,844,593	64,998,286
Other operating revenue	9,912,524	8,471,998	9,668,991
<b>Total operating revenue</b>	<b>74,337,535</b>	<b>75,316,591</b>	<b>74,667,277</b>
Non-operating revenue	7,757,025	3,875,776	3,051,676
<b>Total revenue</b>	<b>82,094,560</b>	<b>79,192,367</b>	<b>77,718,953</b>
<b>EXPENSES</b>	<b>2020</b>	<b>2021</b>	<b>2022</b>
Salaries and benefits	59,786,436	60,445,784	59,798,126
Supplies and other	19,545,169	8,173,340	18,411,435
Depreciation and interest	2,563,054	2,665,298	3,707,752
<b>Total expenses</b>	<b>81,894,659</b>	<b>81,284,422</b>	<b>81,917,313</b>
Total net surplus (Deficit)	199,901*	(2,092,055*)	(4,198,360*)

\*Does not include Post-Retirement Benefit Obligation (GASB75) (GASB68)  
2020, 2021, 2022 financials audited by Fust Charles Chambers LLP



# HONORING THE LEGACY

## Capital Project Advances

The most comprehensive modernization of Lewis County General Hospital in its 91-year history will provide a transformational change to the medical and surgical services to meet our community's current and future healthcare needs.

LCCHS broke ground in April 2022 on a \$32 million surgical pavilion and Medical-Surgical and Critical Care Unit (CCU) modernization capital project. Since breaking ground, extensive site work has included moving approximately 71,000 cubic yards of earth and over 4,200 cubic yards of rock to pave the way for road access, new parking areas, retaining walls, two new 12" diameter water supply lines, and the new surgical pavilion building.

The 26,262 sq. ft. state-of-the-art surgical pavilion will include three operating rooms and one procedure room, doubling the current surgical capacity. In addition, the Medical/Surgical and CCU modernization will revitalize and increase the current 16,894 sq. ft. to create 24 private patient rooms with private baths to ensure patient safety and satisfaction and enhance infection prevention measures. The project also includes a modern nurses' station and private consultation rooms for physicians, patients, and families.

The surgical pavilion is scheduled to open in the Fall of 2023, with the medical-surgical and ICU modernization to be finished in 2024.

**Surgical Pavilion Entrance**



# BUILDING THE FUTURE

## Medical-Surgical, CCU and Surgical Pavilion Progress



Above, architectural rendering of the new Surgical Pavilion. The new state-of-the-art facility is slated to open by Fall 2023. (photo below)



Right, the architectural rendering a medical-surgical patient room and the actual room development in process.



# FRIENDS OF LEWIS COUNTY HOSPICE AND HOSPICE VOLUNTEERS MAKE A DIFFERENCE

Lewis County Hospice is an incredible resource in our community that provides comfort, dignity, respect, and a plan for living for all those coping with a serious or life-limiting illness in the comfort of home. Whether a patient is on Hospice for many months or a few weeks, the team provides expert medical care to keep patients comfortable and able to engage in meaningful time with loved ones. The team is grateful and appreciates the ongoing support of the Friends of Lewis County Hospice, community organizations, businesses and volunteers who support Hospice.



## Friends of Lewis County Hospice present Hospice with a symbolic check for \$150,000

In photo above left to right: LCHS Chief Nursing Officer Marcy Teal, RN, Patient Care Services Coordinator Tammy Suiter, RN, Hospice Medical Director Shirley Tuttle-Malone, D.O., Chief Executive Officer Gerald Cayer, and Friends of Lewis County Hospice representatives, President Joanne Dicob, Vice President Tina Stanford, and Board Members Gretchen Lane and Amy Deavers.

## FRIENDS OF LEWIS COUNTY HOSPICE

### Board of Directors

Joanne Dicob, President  
Tina Stanford, Vice President  
Marsha Zehr, Secretary  
Linda Noftsier, Treasurer  
Amy Deavers  
Mary Ingersoll  
Gretchen Lane  
Sue Matuszczak  
Tina Paczkowski  
Ryan Piche  
Susan Sauer  
Hope Scouten  
Lorna Weber



Lewis County Hospice volunteers, the Friends of Lewis County Hospice, and staff donated items, helped assemble, and delivered gift baskets to current Hospice patients and their families to bring some much needed cheer during the holiday season.



# AUXILIARY VOLUNTEERS MAKE A DIFFERENCE

The LCGH Auxiliary restarted weekly popcorn sales and reopened the Gift Shop and snack bar three days a week after being closed during the COVID-19 pandemic.

The group was also able to host several community fundraisers including their annual Chocolate, Plant, Uniform Sales, and the Hollyberry fundraiser. The Auxiliary also added an illusionist event.

In 2022, the group donated \$400 for nursing home resident gifts, \$250 for LCHS employees 12 Days of Christmas cheer, and \$10,550 in student healthcare scholarships. The Auxiliary pledged \$50,000 over five years in support of the Lewis County Hospital Foundation's Honoring the Legacy, Building the Future capital campaign for Lewis County Health System.



Photo above, Auxiliary volunteers making chocolate covered cherries for the Chocolate sale.

Photos right top and bottom, volunteers give their time to ensure the annual Hollyberry fundraiser is a success!



## LEWIS COUNTY GENERAL HOSPITAL AUXILIARY

### Board Members

Deb Davis, President  
Joanne Kellogg, 1st Vice President  
Connie Martin, 2nd Vice President  
Darcy Zehr, Recording Secretary  
Betty Woods, Corresponding Secretary  
Vicki Roy, Treasurer  
Sharon Kelly, Assistant Treasurer  
Liz Allen  
Kathy Baxter  
Barbara Brown  
Gerald Cayer  
Jennifer Condrey  
Sue Foy  
Anne Hastings  
Mary Ellen Platz  
Vicki Rounds  
David Shivers, past President  
Pam Truax



# LEWIS COUNTY HOSPITAL FOUNDATION

## MISSION

The mission of Lewis County Hospital Foundation is to enrich and enhance the hospital's high-quality healthcare services by building strong community relationships and raising funds to invest in the future of our hospital.

## BOARD OF DIRECTORS

David Bryant, Chair  
Michael Young, Esq., Vice-Chair  
Robert Pfeiffer, Secretary/Treasurer  
Gerald Cayer, President  
Rebecca Dunckel-King  
Janice Lehman

Brian McGrath, Esq.  
Leanne Moser, Esq.  
Anna Platz  
Christina Schell  
Lynne Worden

JoAnne Rhubart, Executive Director

## 2023 HOSPITAL FOUNDATION EVENTS



Friday,  
June 16, 2023  
Brantingham  
Golf Course

Saturday,  
October 14, 2023  
Tug Hill  
Estate

Saturday,  
October 21, 2023  
Lewis County Fair  
Grounds

# Honoring THE LEGACY Building THE FUTURE

## HONORING THE LEGACY, BUILDING THE FUTURE CAPITAL CAMPAIGN

The Lewis County Hospital Foundation is conducting a capital campaign to support the \$32 million capital project at Lewis County General Hospital. The Hospital Foundation Board of Directors have committed to raise \$2.4 million for the project.

The capital project will be the most comprehensive modernization of Lewis County General Hospital in its 91-year history and will transform healthcare for our community for generations to come.



# CAPITAL CAMPAIGN



## HONORING THE LEGACY

In the midst of the Great Depression, the residents of Lewis County understood the importance of a local hospital for our rural community and worked together to make their dream a reality. Lewis County General Hospital was established in 1931 by a group of community members committed to building a hospital for the residents of Lewis County.

With a \$100,000 bond and many donations from the community, the \$220,000 hospital opened its doors on August 4, 1931 and has been providing quality healthcare for the people of Lewis County and the surrounding local communities for the past 91 years.

# CAPITAL CAMPAIGN

## BUILDING THE FUTURE

**Surgical Pavilion:** The capital project will construct a 26,262 sq. ft. state-of-the-art surgical pavilion that will include three (3) operating rooms and one (1) procedure room doubling the current surgical capacity.

**Private Patient Rooms:** The capital project will revitalize and modernize our current 16,894 sq. ft. Medical/Surgical Wing to create twenty four (24) private rooms with private baths to ensure patient safety, satisfaction and enhance infection prevention measures.

**Critical Care Unit (CCU):** The capital project will relocate and expand the current CCU from three (3) semi private rooms to five (5) private rooms.

**Morgue:** The project will relocate and expand the current morgue from two (2) bays to five (5) bays.



## CAPITAL CAMPAIGN GIVING

# JOIN US

We invite you to honor the legacy and build the future of Lewis County General Hospital with a charitable gift to the Lewis County Hospital Foundation's Capital Campaign.

Your contribution to the ***Honoring the Legacy, Building the Future*** Capital Campaign will assist us in creating a transformational change to the medical and surgical services at Lewis County General Hospital to meet the current and future healthcare needs of our community.

You may make a one-time gift or a multi-year pledge to the Capital Campaign. A variety of naming opportunities are available to honor a loved one or show your strong support for the Health System.

For more information on ways you can support the Capital Campaign, please contact the Hospital Foundation office at 315-376-5110 or [jrhubart@lcgh.net](mailto:jrhubart@lcgh.net)

## 1931 LEGACY SOCIETY

### VISIONARY MEMBERS

Dr. Steven Lyndaker and Dr. Shereen Palmer

### FOUNDING MEMBERS

Anonymous (2)  
Gerald and Tami Cayer  
Drs. Sean and Cindy Harney  
Kerry and Jenise Herbine  
Donald Musnicki and Lisbeth Hirschev  
Joe and Michele Prince  
Marcy Teal  
In Memory of Major R.S. Vora  
Dr. Manoj R. and Sheree Vora  
Michael and Lynne Worden  
William and Mary Wormuth



For information on becoming a 1931 Legacy Society Member, please contact the Hospital Foundation at 315-376-5110.

## 2022 EMPLOYEE GIVING

Teresa Allen  
Melinda Andre  
Leigh Baker  
Angela Bauer  
Mackenzie Bellinger  
Trina Berrus  
Karen Borawski  
Jennifer Boucher  
Cynthia Brouty  
Susan Brownell  
Joan Bruckman  
Melissa Clark  
Mary Comet  
Susan Dibble  
Antionette Earles  
Pete Farney  
DeyLynne Farr  
Christina Flint  
Melissa Forney  
Deborah Gates

Jessica Gentry  
Mary Greene  
Gale Grunert  
Heather Hamburg  
Julie Hanno  
Jeff Hellinger  
David Hoffman  
Paula Jenack  
Michelle Kelley  
Kasey Kloster  
Jonna Kloster  
Karli LaVancha  
Kaitlyn Lee  
Randy Lehman  
Diana Luther  
Ava Meyers  
Joan Miller  
Nancy Mooney  
Trista Mullin  
Mallorie Norris  
Lori Peters

Rob Pfeiffer  
Joyce Pleskach  
Cynthia Pominville  
Mandie Robinson  
Sheila Runkles  
Jessica Skiff  
Julie Smith  
Megan Stockman  
Tammy Suiter  
Sandra Sullivan  
Debra Susice  
Cindy Szewil  
Tina Szucs  
Caitlin Tabolt  
Marcy Teal  
Neil Turck  
Rebecca Vary  
Rachael Vary  
Michelle Virkler  
Lisa Widrick  
Darcy Zehr

# 2022 COMMUNITY GIVING

Anonymous (4)  
4-H BRCS Afterschool  
Kelly and Julie Allen  
Stephen and Jill Allen  
Elaine M. Anna  
Bernice Ardison  
Marilyn Armfield  
Kristy Auman  
Patricia Bailey  
Tina J. Bango  
Trudy Bantle  
Daniel and Mary Benedict  
Anne M. Berner  
Julie Berry  
Beta Sigma Phi Xi Delta Phi  
Nancy Beyer  
Steve and Amy Bingle  
Lorraine T. Bobela  
Kimberly J. Boshart  
Bernard and Ruth Brady  
Brantingham Ladies Invitational  
Brookside - Resident Council Fund  
Chand and Jana Brown  
Arel and Barbara Brown  
Amanda L. Brown  
Kathy Burdick  
Brian and Jacqueline Bush  
Gary and Linda Bush  
Janet D. Callahan  
Holly and Verne Camenga  
Martin and Katherine Cannan  
Car-Freshner Corporation  
Carthage Turkey Bowl  
Bruce and Marilyn Chapman  
Charles and Bessie Chartrand  
Jessica Clemons  
Jennifer Condrey  
Constableville Ladies Lunch Group  
Richard and Margaret Cook  
Anne Covey  
Croghan Conservative Mennonite  
Church  
Gary and Darlene Croniser  
John and Mary Dixon  
Bienvenido and Dr. Josefina Domingo  
Judy Duppert  
Christopher and Sandra Earl  
Gerald O. Eaton  
Mark and Amy Eddy  
Kathryn A. Ellison  
Duane and Karen Farney  
Niles E. Farney Jr.  
Wayne and Janet Fiscus  
Jack and Marcia Flint  
Patricia Ford  
James Fowler  
Wayne and Carol Fuller  
Norman and Karen Garris  
Deborah Goedon  
William and Dorothy Gracey  
Gary and Virginia Graver  
Scott Gray  
Stephen and Susan Gray  
Thomas and Barbara Griffiths  
Linda and Richard Grimes  
Brad and Sue Gydesen

Michael and Mary Hall  
Susan Hammecker  
Harold and Ruth Ann Hammond  
Colleen and Michael Hancock  
Douglas and Mary Hanno  
Mark and Glendyne Hanno  
Debra Harrigan  
Rene and Barbara Hart  
Clarence Hendrix  
Kay Hershberger  
Lisbeth Hirschey  
Floyd and Patricia Houck  
Thomas and Dorothy Houppert  
Art Houppert  
Handley and Anne Jackson Jr.  
Jefferson County Rural Letter Carriers  
Association  
Ryan and Kimberly Jock  
Susan P. Kaiding  
Paul and Jennie Kelly  
Andrew J. Knollman  
Patricia F. Koehler  
Josephine Kraeger  
Susan J. Kraeger  
Sam and Linda Kriwox  
Wallace and Cathleen Lambie  
George and Wendy Laribee  
Earl and Christine Lashbrooks Jr.  
LCGH Auxiliary  
Brooke M. Lehman  
John V. Lehman  
Doris A. Lehman  
Sharon I. Leone  
Richard and Patricia Leviker  
Lewis County Memorial VFW 6912 Inc.  
Auxillary  
Lewis County Opportunities, Inc.  
Michael and Donna Lewis  
Long Pond Sno Sled Club Inc.  
Mike and Dawn Ludovici  
Andrea Lynch  
Edwina A. Lyndaker  
Kevin and Jeri Lyndaker  
Douglas and Barbara Marlow  
Barbara Martin  
Sue Matuszczak  
Daniel and Linda McAnulty  
Kevin and Susan McArdle  
Philip E. McDowell  
Brian McGrath  
Joseph and Jacqueline McGuire  
McSweeney Foundation, Inc  
Linda Meyer  
Mark and Kathy Millard  
Arian L. Miller  
Bruce and Kay Monnat  
Gordon and Barbara Monnat  
Dale and Donna Moser  
Rosanna M Moser  
Donald Musnicki  
Linda R. Myers  
Northern Credit Union  
Northern New York Community  
Foundation  
O.D. Greene Lumber and Hardware  
Elinor G. Olmstead  
Patricia A Olmstead  
Edith M. O'Rourke  
Craig and Jill Ortlieb  
Michael and Wendy Pallotta  
Mary Jo Peters

Douglas and Shirley Pleskach  
Kathleen Ramirez  
Frederick and Janice Ramos  
Timothy and Luanne Reagan  
Mary Lou Reed  
Karen A. Rennie  
Richard Rennie  
Veronica R. Robbins  
Barbara G. Roche  
Robert and Donna Rocker  
Beryl and Cathi Roes  
Myron and Julie Roggie  
Roggie Farms LLC  
John and Anne Ross  
Charles and Rose Roy  
Margie L. Ruiz  
Julie D. Salatti  
Carl and Susan Sauer  
Loren and Candace Sauter  
Delroy C. Savage Jr.  
Bernadine Schwartzentruber  
Phyllis Schwendy  
Clair and Gwenda Segovis  
Brian Sheley  
D. Nancy Siemienowicz  
Silver Bench Jewelry  
Mary K. Simpson  
Singing Waters Senior Citizens  
Dale Smith  
William and Kathryn Sochia  
Linda St. Louis  
Kenneth P. Stabb  
James and Sharon Stamp  
Pamela L. Steele  
Therese A. Steiner  
Stewart's Shops  
Maureen and Walton Sugrue  
Gale F. Swiecki  
Henry and Lang Theiling Jr.  
Douglas and Katrina Thomas Jr.  
Dustin Tooker  
Tug Hill Quilters  
Rebecca M. Vary  
Victory Promotions  
Sam and Johanna Villanti  
Theodore and Matilda Virkler  
Carol B. Virkler  
Dr. Manoj R. Vora  
Judy Waligory  
Kathleen R. Wallace  
Rita Walldroff  
Gary and Deborah Walseman  
Renee and Jeffrey Walseman  
Todd and Sandra Weaver  
Duane and Jeanette Wicks  
Carlton and Joan Widrick  
Kenneth and Denise Widrick  
William S. Hein and Co. Inc  
Paul and Louise Wilson  
Victoria L Windover  
Elizabeth Woods  
William and Mary Wormuth  
Mary Kenealy Yancey  
Michael and Kathleen Young  
David and Sally Young  
Sandy Zehr  
Priscilla C. Zeller  
Zenith Copenhagen Chapter 346 OES



## EVENT SPONSORS

AES

American Fundraising Foundation Inc.

AmeriCU Credit Union

BCA Architects & Engineers

Black Horse Group LLC

Bonaparte Pharmacy

Bond, Schoeneck & King, PLLC

Brookfield Renewable Energy Group

C & S Engineers, Inc.

Carthage Federal Savings

Casella Waste Systems

Central New York Cardiology, PC

Community Bank

CSEA, INC

Delphi Hospitalist Services, LLC.

Excellus Bluecross Blueshield

Fust Charles Chambers LLP

Gilroy, Kernan & Gilroy

Hill & Markes Wholesale Distributors

Hummel's OP

Kinney Drugs Foundation

Kopp Billing Agency, Inc.

LCGH Auxiliary

LCGH Medical Staff

Marks Farm

Mohawk Healthcare

Nascentia Health

National Grid

North County Indoor Golf

Northern Credit Union

PCO PC / All-Rads / On-Rad

RBC Wealth Management

Sanico, Inc.

Stewart's Shops

Subway of Lowville

Synergy Health Partners

Victory Promotions

Visiting Nurse Assoc of CNY, Inc.

WWNY TV

---

Lewis County Hospital  
**FOUNDATION**  
Investing in the future of our hospital

*Thank You*

Thank you to our generous donors and sponsors for supporting the  
Lewis County Hospital Foundation.

# PLANNED GIVING

A part of your legacy may include a charitable gift to the Lewis County Hospital Foundation to support the Lewis County Health System in perpetuity.



## OTHER GIVING OPTIONS

**Retirement Plans** – This option allows you to truly maximize your meaningful gift. You can avoid taxes on retirement plan distributions by naming the Community Foundation as the beneficiary, listing the Lewis County Hospital Foundation Endowment or Sustainability Fund, or creating your own fund for our community organization.

**Life Insurance** – List the Community Foundation as the beneficiary and designate the contribution to the Lewis County Hospital Foundation Endowment or Sustainability Fund. It is an efficient option that maximizes the value of your charitable gift and also allows you to receive a tax deduction.

Other legacy planning options include charitable gift annuities (CGAs), charitable remainder trusts (CRTs) and more. To discuss legacy planning or other charitable giving interests through the Community Foundation, please contact their office at (315) 782-7110.

## BEQUEST

A charitable bequest is one of the easiest ways to support the Lewis County Hospital Foundation. A bequest costs nothing during your lifetime and is a revocable gift that can be changed or modified at any time. You may create a bequest in any dollar amount, gift property or designate a percentage of your estate in your will.

## ENDOWMENT FUND

A gift to the Hospital Foundation's Endowment Fund, a permanent fund managed by the Northern New York Community Foundation, is truly a gift that keeps on giving. Endowment Fund gifts are invested and only the interest is used to support the Lewis County Health System. The principal remains intact.

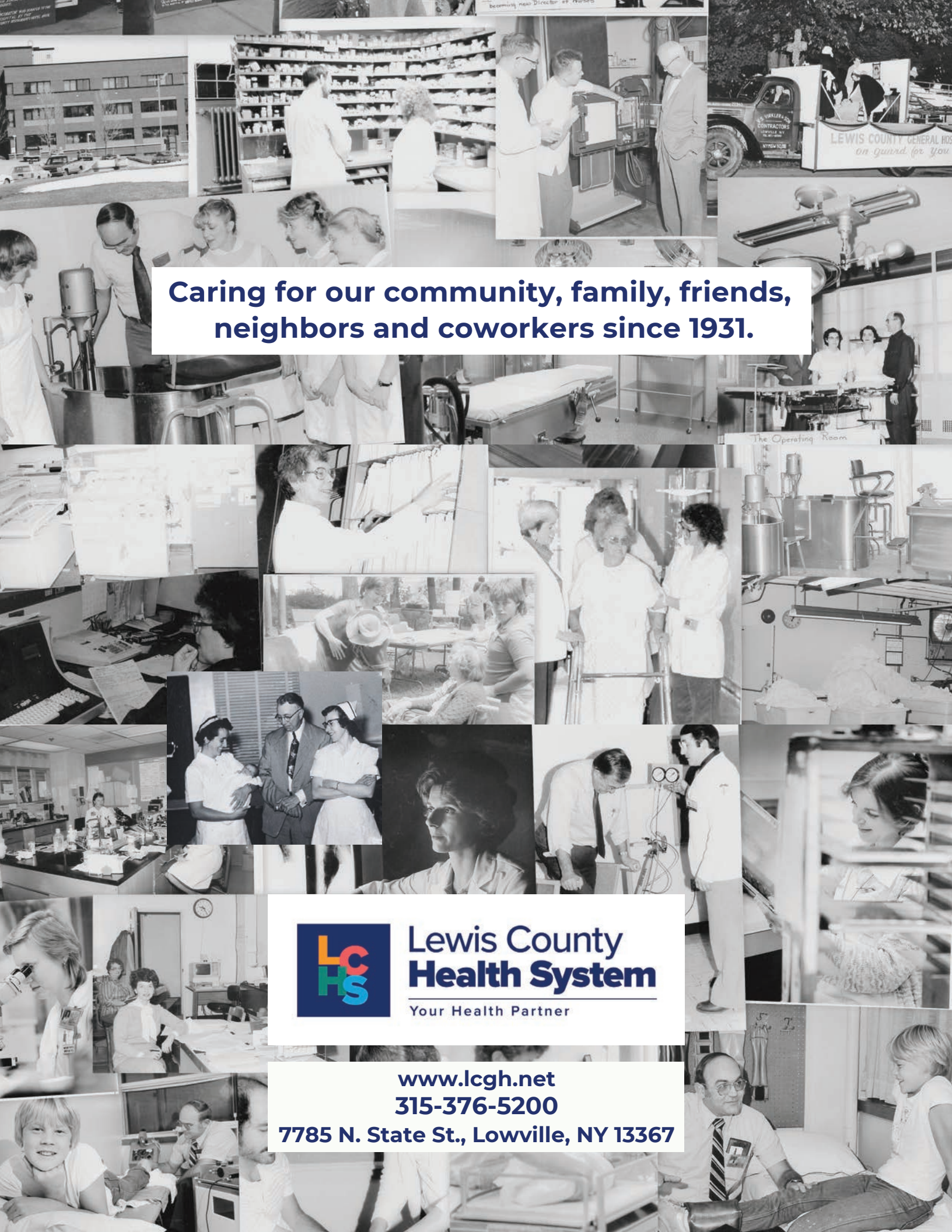
## SUSTAINABILITY FUND

A gift to the Lewis County Hospital Foundation's Sustainability Fund, a permanent fund managed by the Northern New York Community Foundation, is structured to provide flexibility to meet the current and future needs of the Lewis County Health System.



Above, Summer 2022 aerial view of the Surgical Pavilion construction site prep work.  
Below, Spring 2023 aerial view of the new Surgical Pavilion.





**Caring for our community, family, friends,  
neighbors and coworkers since 1931.**



**Lewis County  
Health System**

Your Health Partner

**www.lcgh.net  
315-376-5200  
7785 N. State St., Lowville, NY 13367**